

Tehoa vesien tilan seurantaan

**Tietoa yhdistelemällä
(Datafuusio)**

Olli Malve

Johtava tutkija, Vesikeskus

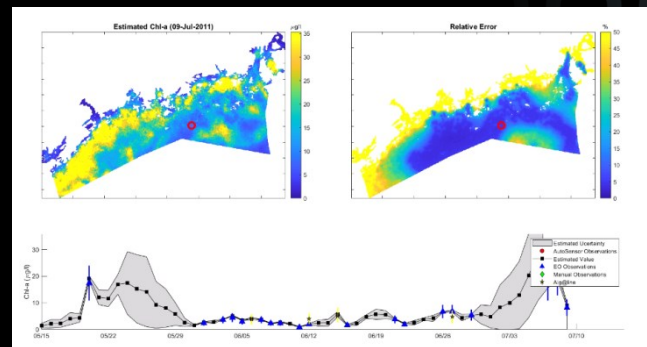
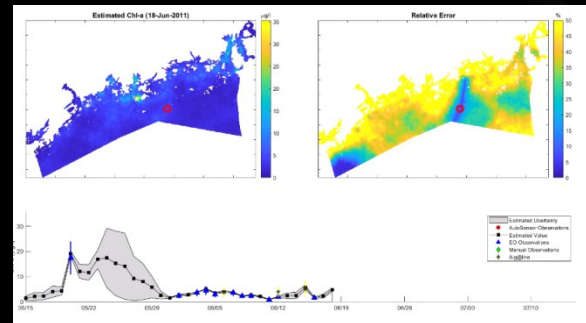
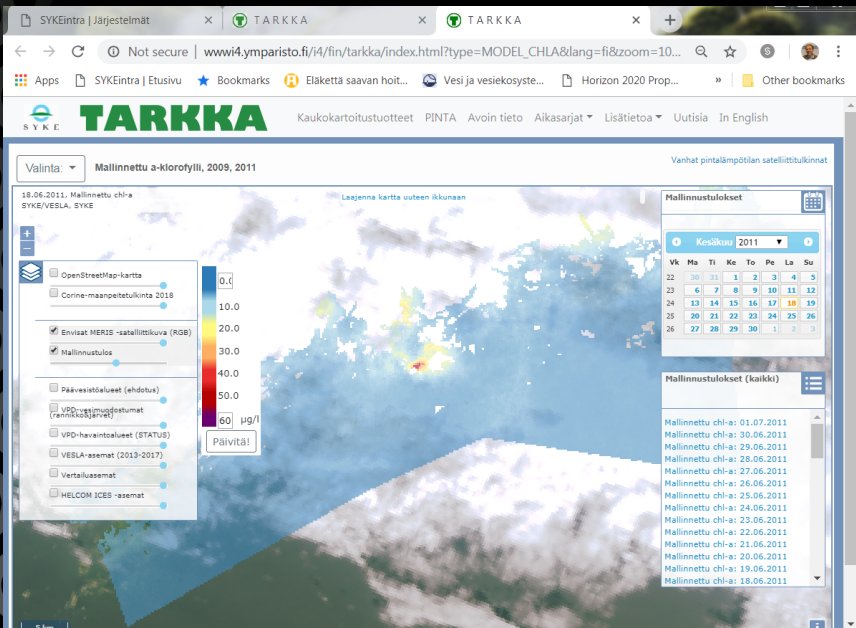
(YTO, VK, Tietokeskus, Merikeskus, IL,

Lappeenrannan Tekninen yliopisto, Arbonaut Oy)



S Y K E

TARKKA satelliitti palvelu yhdistää (datafuusio) vesianalyysit ja muun mittatiedon satelliittitietoon



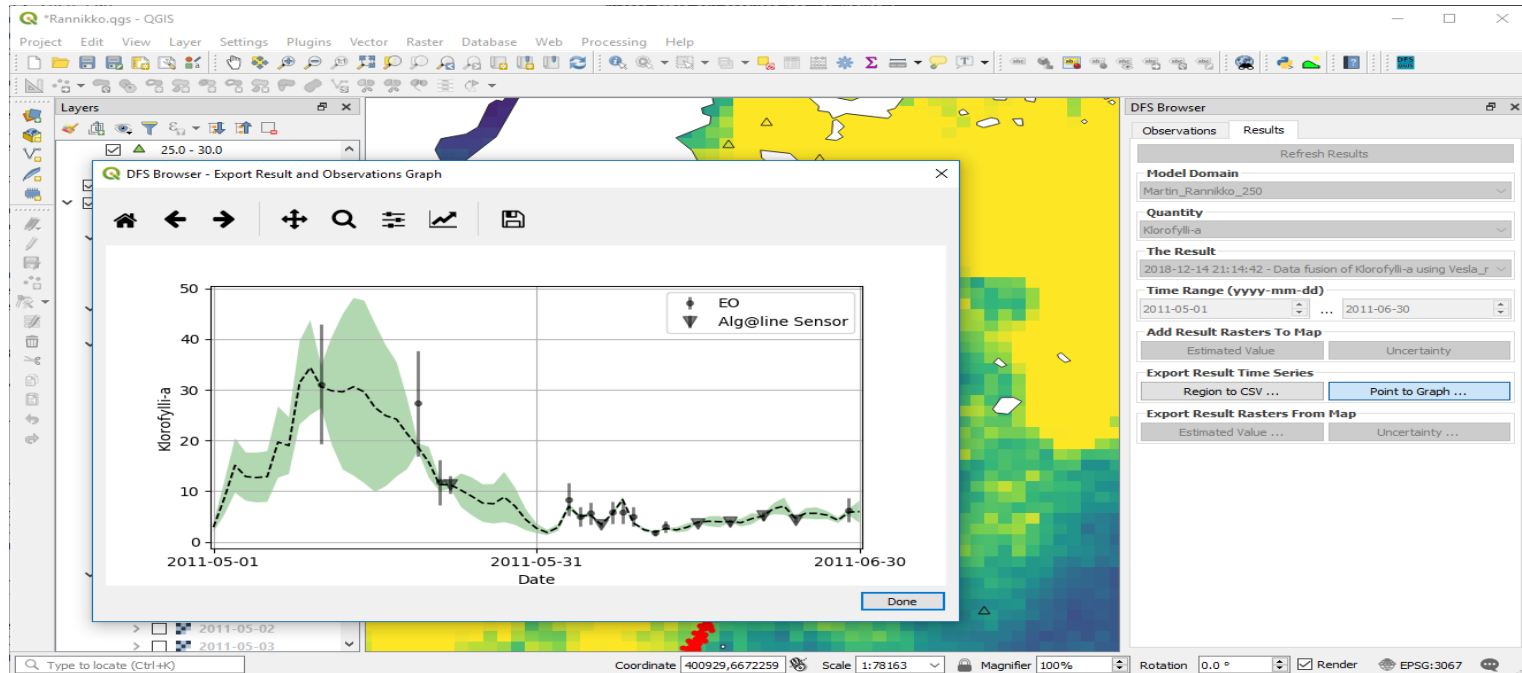
Datafuusio asiantuntija QGIS- tietojärjestelmä

- QGIS – Datan yhdistäminen ja tulosten visualisointi

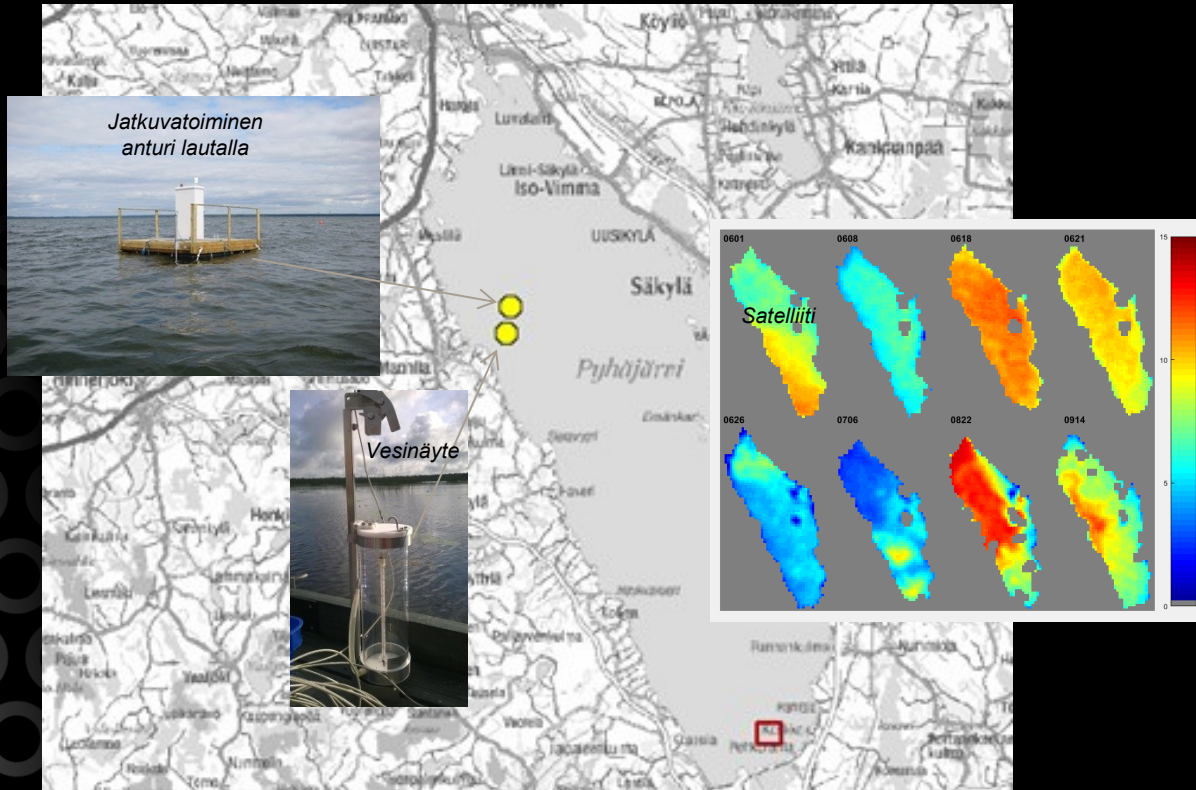
The screenshot displays the QGIS interface for a project named 'Rannikko.qgs'. The Layers panel on the left shows a tree structure with 'Rannikko model boundary' at the top, followed by 'DFS Browser', 'Point Observation Datasets' (including 'VESLA dummy' and 'Alg@line'), and 'Result Raster Datasets' (including 'Rannikko_250, Klorofylli...' and a list of dates from 2011-05-01 to 2011-05-20). The central map view shows a coastal area with a color-coded raster representing chlorophyll-a concentration, with a red line overlaid. The DFS Browser panel on the right is titled 'DFS Browser' and has tabs for 'Observations' and 'Results'. It includes a 'Refresh Results' button, a 'Model Domain' dropdown set to 'Rannikko_250', a 'Quantity' dropdown set to 'Klorofylli-a', and 'The Result' section showing '2018-12-14 21:14:42 - Data fusion of Klorofylli-a using Vesla_r'. Below this is a 'Time Range (yyyy-mm-dd)' section with '2011-05-01' and '2011-06-30' selected. There are buttons for 'Add Result Rasters To Map' (Estimated Value, Uncertainty), 'Export Result Time Series' (Region to CSV..., Point to Graph...), and 'Export Result Rasters From Map' (Estimated Value..., Uncertainty...). A callout box labeled 'DFS Browser component' points to this panel.

Datafuusio QGIS liittymä

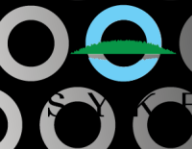
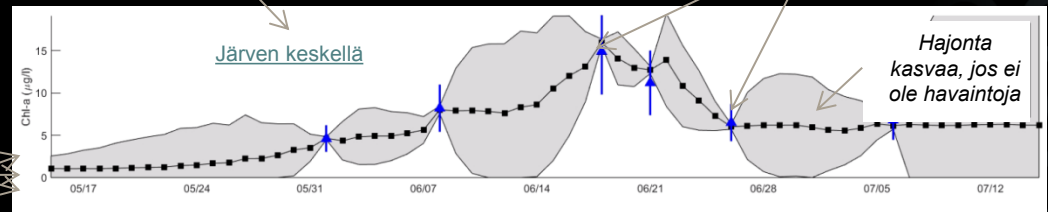
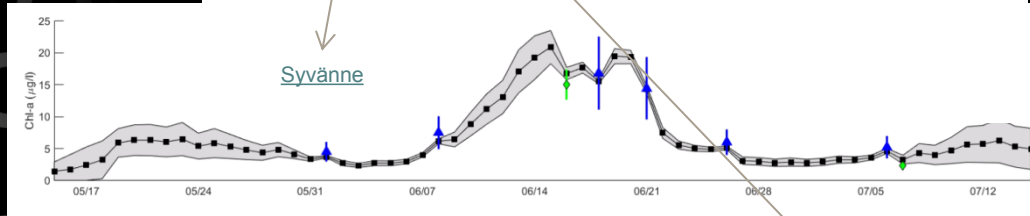
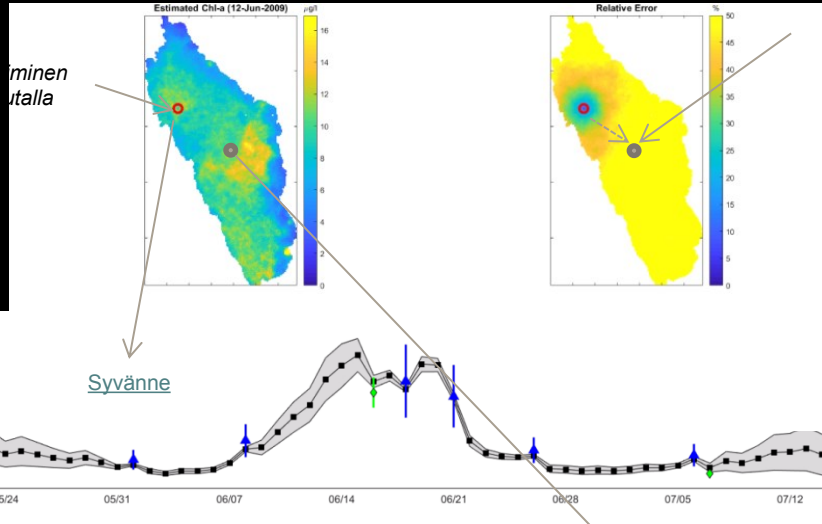
- Tulosten visualisointi ja siirto muihin sovelluksiin



Säkylän Pyhäjärven levämittaukset

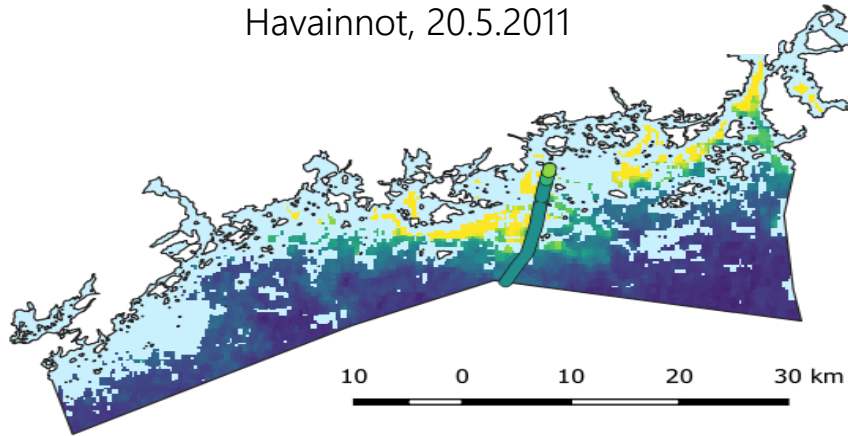


Kesän levätilanne

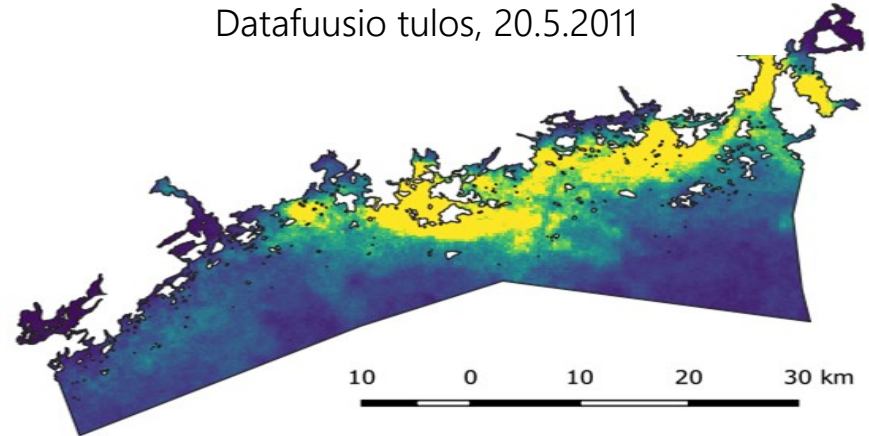


Porkkala-Porvoo, 19.5.2011, Chlorophyll-a

Havainnot, 20.5.2011



Datafuusio tulos, 20.5.2011



Chlorophyll-a ($\mu\text{g/l}$)



- Model boundary
- △ VESLA
- Alg@line

Lisätietoa

[www-sivu](#)

olli.malve@ymparisto.fi

